

## 702231

### FUEL VALVE KIT MINI-MARK®

#### USER INSTRUCTIONS

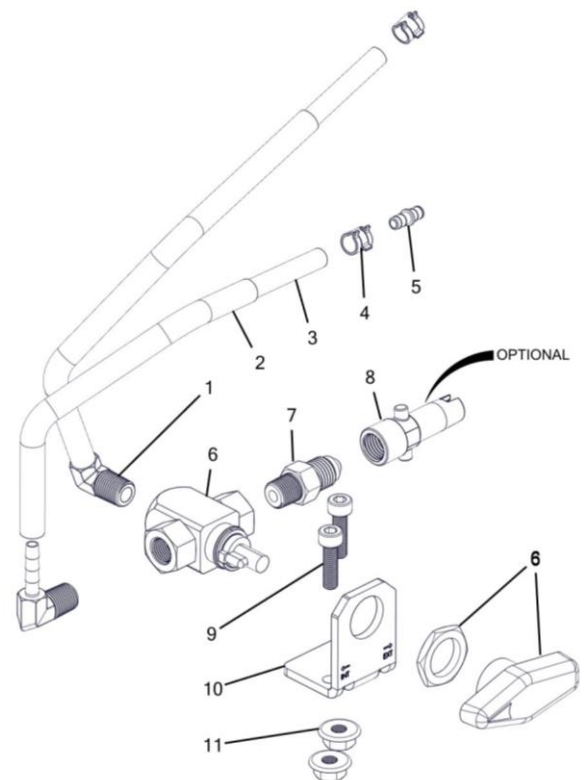
##### Overview

The User Instructions cover the installation of the Fuel Valve Kit for the MINI-MARK® Watson Edition. The Fuel Valve Kit is an optional item that users can purchase to allow for an external fuel tank to be connected to the MINI-MARK. The kit will allow users to choose between internal and external fuel tank operation with the help of a 3-way valve.

##### Parts Breakdown

ID	ITEM NO	DESCRIPTION	QTY
--	702230	FUEL VALVE KIT MINI-MARK®	--
1	702228	ELBOW BARB 3/16 TO MNPT 1/8 BRASS	2
2	702227	SLEEVE ELECTRICAL BRAIDED OVERLAP BLACK 3/8"ID	2
3	702225	TUBING 4MM ID X 7MM OD YELLOW TYGON	2
4	702263	HOSE CLAMP SPRING BAND .25-.28" 9/32" WIDE GALV.	2
5	702226	COUPLER BARB STRAIGHT 4MM BRASS	1
6	800796	PART-24 1/8 -3WAY VALVE	1
7	800814	R-732 CONNECTOR 1/4" TUBE X 1/8" NPT	1
8	702057*	CONNECTOR FUEL MERCURY MALE TO SAE FEM. WATSON	1
9	702224	SCREW M5X0.8X18 HEX SOCKET CAP SS DIN 912	2
10	702223	BRACKET FUEL VALVE MINI-MARK®	1
11	702070	NUT M5X0.8 HEX FLANGE ZINC	2

\*Optional Line Item. Sold separately.



## Installing the Fuel Valve Kit

### Before Installation

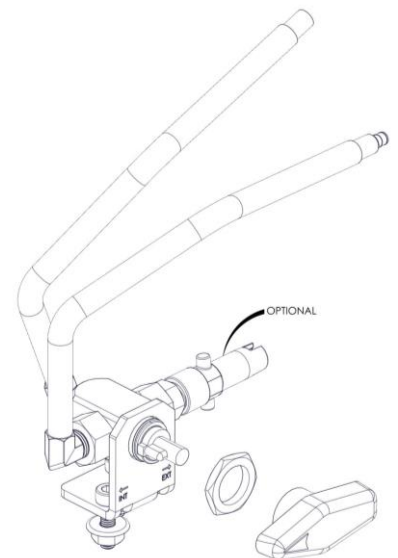
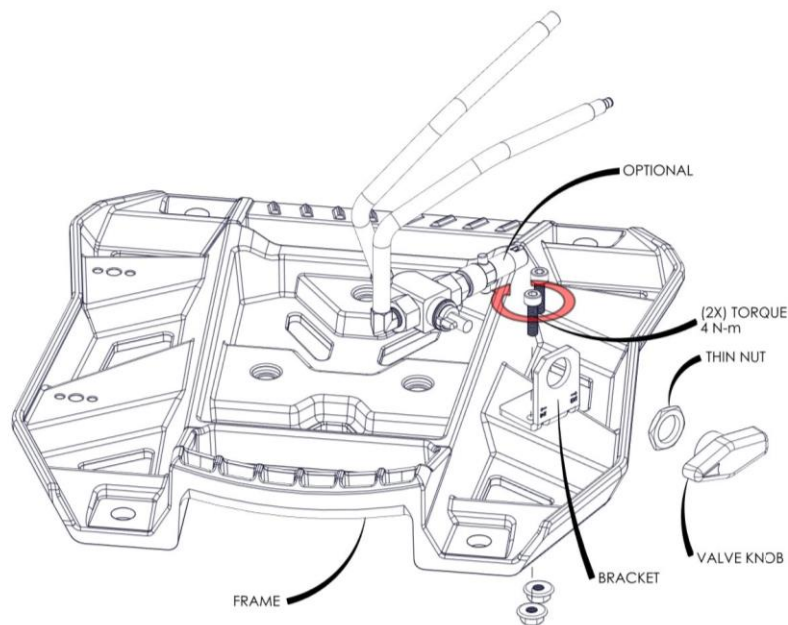
- Read and follow all instructions thoroughly and carefully.

### Tools and Materials Required

- Torque wrench
- SAE Wrench
  - 13/16"
  - 11mm
- SAE Socket wrench with the following socket:
  - 10mm
- SAE Allen keys:
  - 4mm
  - 3/32"
- Medium strength thread locker solution (e.g. Loctite® 243)

### Preparing the Fuel Valve Kit for Installation

1. Screw in the bracket (10) on the base frame of the pump using screws (9) and nuts (11). Use Loctite® 243 and tighten to 4 N-m.
2. Remove the valve knob by loosening the set screw holding the knob in place. Use the 3/32" allen key.
3. Install the valve assembly into the bracket as shown. Tighten the thin nut using a 13/16" wrench.
4. Install the valve knob on the valve. Tighten the set screw to secure the valve knob. Make sure not to overtighten the set screw to avoid stripping the threads.
5. The kit is now ready to interface with the carburetor and fuel tank.
6. If applicable, install the optional Mercury Fuel Connector using the 11mm wrench. Tighten firmly.



## Connecting the Fuel Valve Kit to the engine.

1. Carefully disconnect the fuel line from the carburetor by first removing the fuel clamp. Slowly twisting while pulling can be helpful.

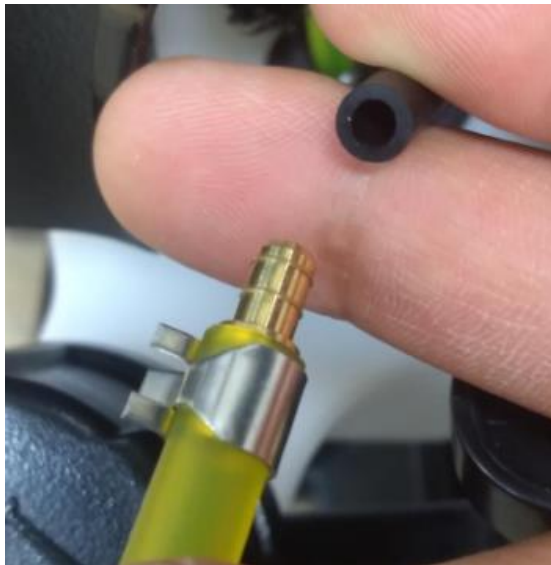
**Important:** refrain from using pliers to pull the hose to avoid damaging it.



2. Locate the 'common' line from the Fuel Valve Kit (does not have male barb fitting). Connect this line to the carburetor. Secure the line with the clamp (4) as shown.

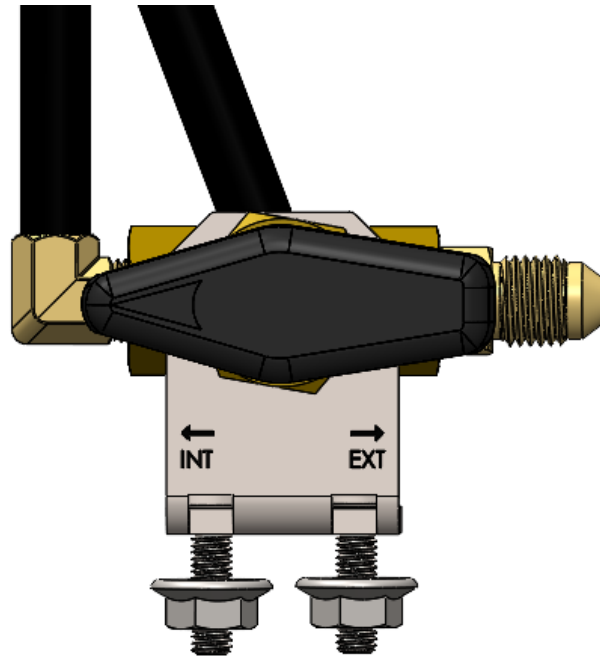


3. Locate the 'internal' fuel line on the Fuel Valve Kit (has a male barb fitting).  
Connect this line to the fuel tank hose. Secure line using the clamp you disconnected in Step 1.



## Operating with the Fuel Valve Kit.

When using the Fuel Valve Kit, position the valve knob arrow to 'EXT' for external fuel tank operation and to 'INT' for internal fuel tank operation. Note that the internal fuel tank can carry up to 1L of fuel providing you with 1 hour of runtime at full throttle.



# **WATERAX**

All information contained in this document including drawings is proprietary to *WATERAX* and may not be copied, reproduced or used in whole or in part without our prior written permission. The information in this document is subject to change without notice. Model displayed with multiple options. Weight and dimensions are approximated and may vary depending on options.

**WATERAX INC.**

6635 Henri-Bourassa W.  
Montreal, QC H4R 1E1

T 514 637-1818

F 514 637-3985

TF 1 855 616-1818

[info@waterax.com](mailto:info@waterax.com)

**waterax.com**

To help you stay **#ReadyForWildfires**, we've made a few changes, placing 100% of our focus on manufacturing our core products, portable fire pumps.

To do so, we've established a network of trusted supply and distribution partners that can help us provide *WATERAX* pumps quickly in addition to water-handling equipment and accessories.

For immediate assistance when it comes to pumps and water-handling accessories, please [contact your local dealer](#).

For genuine spare parts, visit our [online store](#).

Copyright © 2025 WATERAX Inc.

Publication Number: 702231, Rev.3 All rights reserved. Printed in Canada.