



**MINI-MARK®**



**MINI-MARK®**

Item no: **100147**  
Dry weight: **19 lbs** (8.6 kg)

**Flow rate at specified pressure**  
Maximum pressure: **85 PSI** (6 Bar)  
Free flow: **102 US gals/min** (386 L/min)  
Maximum head: **196'** (60 m)

The **MINI-MARK®** lightweight high-pressure pump is equipped with a powerful 2.3 HP 2-stroke engine and a single-stage pump end. Designed for versatility and portability, the MINI-MARK® packs a powerful punch in a compact frame. Whether it's initial attack firefighting or structure protection, the MINI-MARK® is the ultimate lightweight solution for demanding operations.

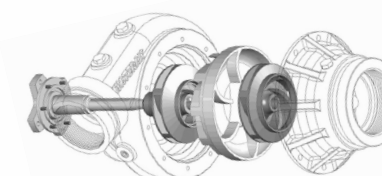
**THE WATERAX WAY**

WATERAX has been a pioneering force in the world of portable firefighting pumps since 1898. With over a century of expertise under our belt, we continue to lead the industry with innovative solutions and a steadfast commitment to reliability and performance.

**DETACHABLE MULTI-STAGE PUMP ENDS**

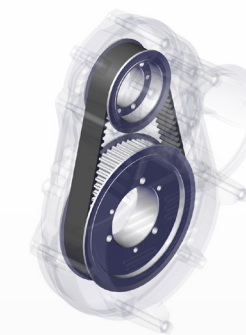
WATERAX performance and dependability come from our superior multi-stage pump end design that provides unrivaled pressure and volume.

- Unique blister-resistant mechanical rotary seal to prolong pump end longevity.
- Maintenance-free sealed bearing to avoid the need for greasing the pump end in the field.
- Anodized aluminum impellers and pump body that eliminate galvanic corrosion common with bronze impellers.



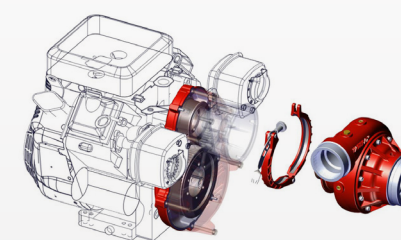
**LOW-MAINTENANCE DRIVE ASSEMBLY**

Originally designed for the BB-4®, the WATERAX low-maintenance drive assembly has been time-tested under the most difficult conditions and proven to be **dependable and reliable for over 40 years**.



**INNOVATIVE QUICK-RELEASE CLAMP**

Our innovative pump end quick-release clamp provides ease of maintenance without having to disassemble the complete unit, thus **significantly reducing equipment downtime**, which can prove crucial in emergency situations.



**CONVENIENT 2-IN-1 SYSTEM**

The WATERAX 2-in-1 system enables **easy on-site interchanging of pump ends**. The platform is also compatible with either a high-pressure or a mid-range pump end, providing users with maximal performance flexibility at the lowest possible cost.



Explore our new vehicle-mounted pump brochure and find the right solution for your next build.

**PORTABLE PUMPS**

**When Mobility Meets Power.**

**VERSAX® SERIES**

The **VERSAX® multipurpose pump** is a versatile, rugged and economical twin-impeller self-priming pump powered by a Honda or a Briggs & Stratton Vanguard engine. It provides superior water-transfer performance as well as the ability to combat fire from greater distances and points of elevation.



**VS2-6P**

Item no: **100076**  
Dry weight: **57 lbs** (25.9 kg)



**VS2-6W**

Item no: **100110**  
Dry weight: **73 lbs** (33 kg)

**Flow rate at specified pressure**  
Maximum pressure: **120 PSI** (8.3 Bar)  
Free flow: **105 US gals/min** (397 L/min)  
Maximum head: **277'** (84 m)



**VS2-9P**

Item no: **100077**  
Dry weight: **83 lbs** (37.6 kg)



**VS2-9W**

Item no: **100111**  
Dry weight: **99 lbs** (44.8 kg)

**Flow rate at specified pressure**  
Maximum pressure: **150 PSI** (10.3 Bar)  
Free flow: **105 US gals/min** (397 L/min)  
Maximum head: **347'** (106 m)



**VS2-9EW**

Item no: **100112**  
Dry weight: **117 lbs** (52.9 kg)

*\*With an electric start and battery*



**WATERAX INC.**  
6635 Henri-Bourassa W.  
Montréal, QC H4R 1E1  
T 514-637-1818

**WATERAX CORP.**  
3701 Innovation Way,  
Valparaiso, IN 46383  
T 360-574-1818

**FOLLOW US**



info@waterax.com  
www.waterax.com

TF 1-855-616-1818



## STRIKER™ SERIES

The **STRIKER™ high-pressure fire pump** pairs a Honda or a Briggs & Stratton Vanguard 4-stroke engine with either 2, 3 or 4 stage WATERAX pump end. Applications include skid units, cabin protection and snowmaking. They share common parts with the MARK-3® and BB-4® pumps and are renowned for the same durability and reliability.

The WATERAX quick-release clamp provided on the pump lets you replace a damaged pump end in the field with minimal equipment downtime.



### STR2-13P

Item no: **100046**  
Dry weight: **127 lbs** (58 kg)

**Flow rate at specified pressure**  
Maximum pressure: **230 PSI** (15.9 Bar)  
Free flow: **105 US gals/min** (397 L/min)  
Maximum head: **531'** (162 m)



### STR3-13P

Item no: **100049**  
Dry weight: **129 lbs** (59 kg)

**Flow rate at specified pressure**  
Maximum pressure: **345 PSI** (23.8 Bar)  
Free flow: **102 US gals/min** (386 L/min)  
Maximum head: **797'** (243 m)



### STR3-13S

Item no: **100048**  
Dry weight: **125 lbs** (57 kg)

## MARK-3® SERIES

**Flow rate at specified pressure**  
Maximum pressure: **380 PSI** (26.2 Bar)  
Free flow: **100 US gals/min** (379 L/min)  
Maximum head: **877'** (267 m)



### MK3-W

Item no: **100137**  
Dry weight: **44 lbs** (20 kg)

The **MK3-W** carries forward the legacy of the original MARK-3® with cutting-edge innovation. Precision-engineered for maximum performance, it's built to deliver unmatched power-to-weight ratio and reliability in the most extreme conditions. The MK3-W is meant to be used at **full throttle!**



### MK3-WW

Item no: **100159**  
Dry weight: **53.2 lbs** (24.1 kg)  
Wet weight: **59.6 lbs** (27 kg)

The **MK3-WW** is purpose-built to deliver exceptional portability and endurance for wildland firefighting operations. Its integrated **1 US gallon (3.8 L)** fuel tank provides up to **~45 minutes** of uninterrupted runtime at full throttle - **100%** and **~65 minutes** at **75%** throttle, allowing crews to stay focused on suppression efforts instead of refueling.



### MK3-ES

Item no: **100168**  
Dry weight: **43 lbs** (19.5 kg)

The **MK3-ES** delivers the trusted high-pressure performance of the MARK-3® platform in its simplest and most rugged form. Designed for crews who prioritize durability and straightforward operation. Lightweight, compact, and easy to deploy, the MK3-ES is ideal for use as a primary, auxiliary, or industrial-use pump.



### MK3-EWS

Item no: **100169**  
Dry weight: **51.7 lbs** (23.5 kg)  
Wet weight: **58.1 lbs** (26.4 kg)

The **MK3-EWS** delivers the trusted high-pressure performance of the MARK-3® platform with the simplicity and durability of a fully mechanical system. Designed for crews who need a dependable, no-nonsense pump, it features an integrated 1 US gallon (3.8 L) fuel tank that delivers up to **~45 minutes** of uninterrupted runtime at full throttle - **100%** and **~65 minutes** at **75%** throttle. This is ideal for rapid deployment, sustained operations, and field conditions where refueling interruptions are not an option.

## BB4® SERIES

The **BB-4® high-pressure fire pump** has been used by forestry agencies to combat wildfires for over 40 years. It has been the weapon of choice in many wildland operations. The BB-4® pump generates the high pressure required to overcome challenges that arise in difficult terrain.



### BB-4-18P

Item no: **100037**  
Dry weight: **167 lbs** (76 kg)

**Flow rate at specified pressure**  
Maximum pressure: **440 PSI** (30.3 Bar)  
Free flow: **104 US gals/min** (394 L/min)  
Maximum head: **1016'** (310 m)



### BB-4-23PX

Item no: **100134**  
Dry weight: **170 lbs** (77 kg)

**Flow rate at specified pressure**  
Maximum pressure: **440 PSI** (30.3 Bar)  
Free flow: **106 US gals/min** (401 L/min)  
Maximum head: **1016'** (310 m)

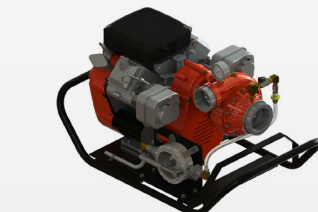


### BB-4-23PXT

Item no: **100018**  
Dry weight: **170 lbs** (77 kg)

## B2X™ SERIES

The **B2X™ mid-range pump** is powered by a choice of Briggs and Stratton Vanguard or Honda 4-stroke engines. Dedicated to wildland and urban interface operations, it combines both pressure and volume to deliver the best performance of its class with minimal operating costs. Unlike other pumps, the B2X™ uses a low maintenance drive-belt system that provides efficient and dependable performance.



### B2X-18P

Item no: **100065**  
Dry weight: **167 lbs** (76 kg)

**Flow rate at specified pressure**  
Maximum pressure: **190 PSI** (13.1 Bar)  
Free flow: **300 US gals/min** (1136 L/min)  
Maximum head: **439'** (134 m)



### B2X-23PC

Item no: **100064**  
Dry weight: **169 lbs** (76.6 kg)

**Flow rate at specified pressure**  
Maximum pressure: **200 PSI** (13.8 Bar)  
Free flow: **300 US gals/min** (1136 L/min)  
Maximum head: **462'** (141 m)



### B2X-23PXT

Item no: **100073**  
Dry weight: **170 lbs** (77 kg)

## STRIKER™ DIESEL SERIES



### STR4-DY10PETC

Item no: **100153**  
Dry weight: **206 lbs** (93.4 kg)



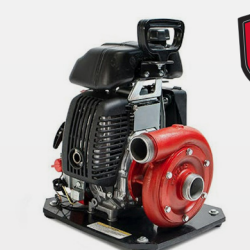
Compatible with DCP

**Flow rate at specified pressure**  
Maximum pressure: **310 PSI** (21.4 Bar)  
Free flow: **112 US gals/min** (424 L/min)  
Maximum head: **716'** (218 m)

The **STRIKER-4 high-pressure fire pump diesel portable** pairs a dependable YANMAR L100 diesel engine - delivering 9.3 HP - with the innovative, lightweight, and highly efficient MARK-3® 4-stage pump end to provide outstanding performance in demanding field conditions.

Fully DCP-compatible in both single and dual control panel setups, it allows engine speed adjustment via a linear throttle actuator.

## MINI-STRIKER®



### MINI-STRIKER®

Item no: **100053**  
Dry weight: **20 lbs** (9 kg)

**Flow rate at specified pressure**  
Maximum pressure: **85 PSI** (6 Bar)  
Free flow: **80 US gals/min** (303 L/min)  
Maximum head: **196'** (60 m)

The **MINI-STRIKER® lightweight high-pressure pump** combines a single-stage pump end powered by a reliable Honda 4-stroke 2.5 HP engine to generate class leading performance. It is well suited for initial attack operations and performs well when used by itself or in tandem with other pumps.