

## MINI STRIKER®

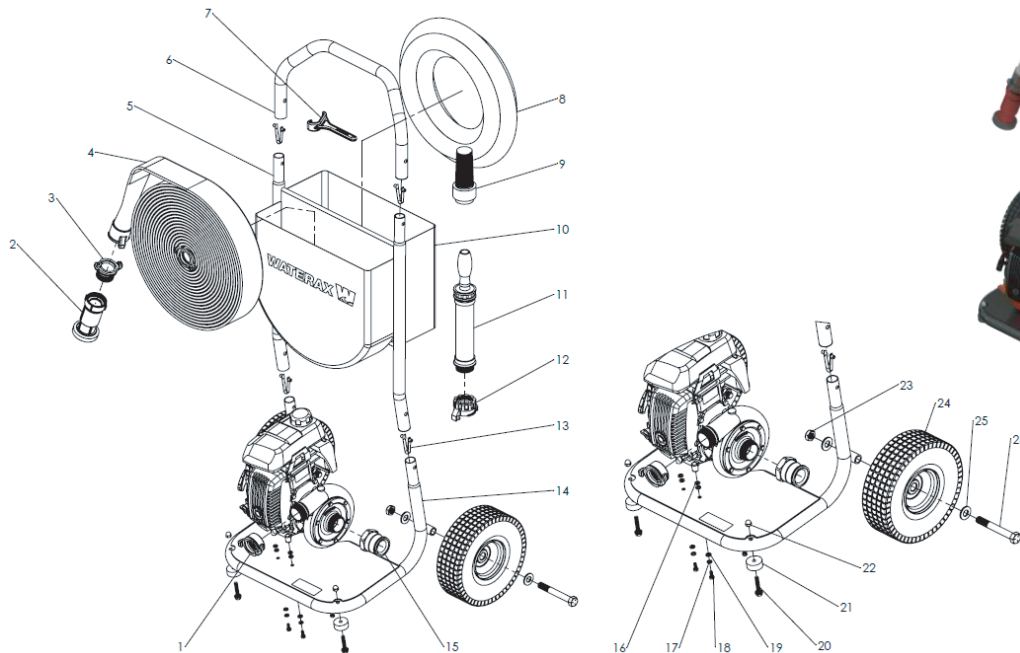
### USER INSTRUCTIONS

### MSTR-C MINI STRIKER CART SYSTEM

#### Overview:

This document explains how to install the components provided with the MINI-STRIKER Cart System. It also provides owners with parts breakdown for spare parts.

#### Parts Breakdown:



# USER INSTRUCTIONS

ID	ITEM NO	DESCRIPTION	QTY	ID	ITEM NO	DESCRIPTION	QTY
1	250183	FA-4 ADAPTOR, INST. TO 1 1/2"NPSH F.	1	14	701382	FRAME FOR MINI-STRIKER CART	1
2	301059	4038-HF NOZZLE 1.5NPSH FOG/STR STREAM 50-100 GPM	1	15	302489	1.5" NPSH F X 1.5" CAMLOC M ALUM	1
3	250181	FA-3 ADAPTOR, INST. TO 1 1/2"NPSH M	1	16	800522	FAST-516 WASHER M6 FLAT NYLON	4
4	400496	HOSE 1.5 X 100 WX-187-I TYPE I INST ALUM	1	17	801107	LOCKWASHER M6 SPLIT BOWED ZINC DICHROMATE DIN128A	4
5	701300	FRAME EXTENSION ASSEMBLY VERSAX®	1	18	800528	FAST-19 SCREW M6X1.0X16 HEX CAP ZINC	4
6	701301	FRAME HANDLE VERSAX	1	19	800549	FAST-510 WASHER M6 FLAT ZINC	8
7	250124	B-2066 UNIVERSAL HOSE WRENCH	1	20	801286	SCREW 5/16-18X1-3/4 FLANGE HEX CAP ZINC	2
8	400489	HOSE SUCTION 1.5" X 16' F CAM X M NPT	1	21	800420	C-6650- 10 RUBBER MOUNT	2
9	302469	FOOT VALVE AND STRAINER 1-1/2" NPT BRASS	1	22	801287	NUT 5/16-18 HEX ACORN ZINC	2
10	701306	EQUIPMENT POUCH VERSAX	1	23	801284	NUT 5/8-11 HEX THIN NYLON LOCK ZINC	2
11	300983	B-5980P PLASTIC HAND PRIMER 1.5 NPSH	1	24	801290	WHEEL 10" FLAT FREE 16MMX50MM HUB	2
12	302496	4089F ADAPTOR INST. TO 1-1/2" NPSH F	1	25	801279	WASHER 5/8 FLAT ZINC	4
13	801288	QUICK RELEASE BUTTON FOR TUBING	4	26	801283	SCREW 5/8-11X4-3/4 HEX CAP ZINC	2

## Installation:

### Tools Required:

- SAE Socket wrench with sockets: 15/16"
- SAE Wrench key: 15/16"
- Pipe Wrench

### Steps:

- Install the frame extension #5 onto the base frame of the pump, ensuring a proper lock between the extension and the quick release buttons.
- Install the handle #6 in the frame extension #5.

**IMPORTANT:** Ensure that the handle #6 and the frame extension #5 are fully engaged with the quick release buttons. A misalignment or a bad fit may result in the handle or extension slipping out of place and dropping the pump which may result in equipment damage and injuries. Refer to figure 1.

- Install wheel #24 onto the frame #14 using hardware 23, 25 & 26. Note that over tightening the nylon lock nut #23 will restrict the rotation of the wheel. When tightening, ensure that the wheel is free to move. Ensure however that the nut is fully engaged onto the screw threads.
- Install equipment pouch #10 onto frame extension #5 using the snap buttons and the Velcro straps.
- Place the hose and equipment into their respective compartment in the equipment pouch #10.S
- Install footvalve #9 onto NPT side of suction hose #8. Apply Teflon tape onto the male portion of the threads for proper seal.



Figure 1: Good fit

## Warranty, Service and Support

Product and service documentation such as tech notes, data sheets, manuals and information on the limited warranty provided on products manufactured by WATERAX can be found on our Web site at: [www.waterax.com](http://www.waterax.com).



**WE MOVE  
WATER**

# **WATERAX**

All information contained in this document including drawings is proprietary to *WATERAX* and may not be copied, reproduced or used in whole or in part without our prior written permission. The information in this document is subject to change without notice. Model displayed with multiple options. Weight and dimensions are approximated and may vary depending on options.

**WATERAX INC.**

6635 Henri-Bourassa W.  
Montreal, QC H4R 1E1

T 514 637-1818

F 514 637-3985

TF 1 855 616 616-1818

[info@waterax.com](mailto:info@waterax.com)

**waterax.com**

To help you stay **#ReadyForWildfires**, we've made a few changes, placing 100% of our focus on manufacturing our core products, portable fire pumps.

To do so, we've established a network of trusted supply and distribution partners that can help us provide *WATERAX* pumps quickly in addition to water-handling equipment and accessories.

For immediate assistance when it comes to pumps and water-handling accessories, please contact your local dealer.

For genuine spare parts, visit our online store.

MINI-STRIKER® is a trademark of Waterax.



**WE MOVE  
WATER**