

BB-4®

Toggle Switch Retro Fit Fit-MCP & Engine Control Panel (701946)

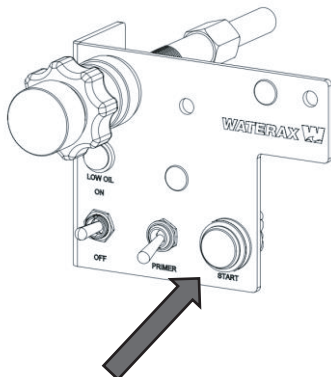
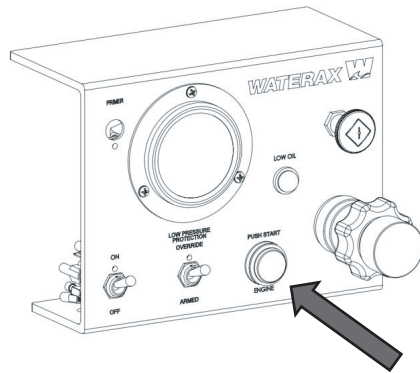
TECH-NOTE

Overview:

Some customers have reported intermittence issues on the PUSH START button on the MCP (250235 Mini Control Panel) and on the Engine Mount Control Panel found on the portable BB-4® or B2X™ fire pumps.

WATERAX has upgraded the push start button to a toggle switch which is not susceptible to intermittence issues. This tech-note details the parts and the installation instructions for the retrofit kit.

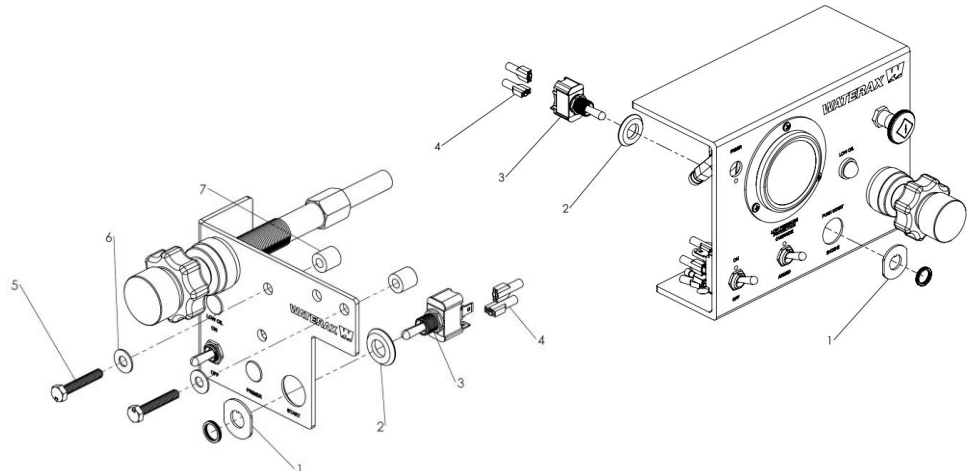
PREVIOUS PUSH START BUTTON:



NEW TOGGLE SWITCH & HARDWARE:

ID	ITEM NO	DESCRIPTION	QTY
-	701946	TOGGLE SWITCH RETRO FIT KIT-MCP & ENGINE CTRL PNL	-
1	701943	PLATE FOR TOGGLE SWITCH PANEL MOUNT	1
2	701944	WASHER TAPER FOR TOG SWITCH MCP & ENGINE CTRL PNL	1
3	800904	PART-381 SW TOGGLE, SPST, 15A, OFF-(ON)	1
4	800909	PART-37 FEMALE DISCONNECT TERM 22-18GA	2
5*	701950	SCREW M6X1.0X35 HEX CAP ZINC	2
6*	800474	D-5269-7 WASHER 1/4 FLAT SS	2
7*	701951	SPACER ALU. 13MM OD X 13MM LG FOR M6 SCREW	2

*Only used on Engine Mount Control Panel



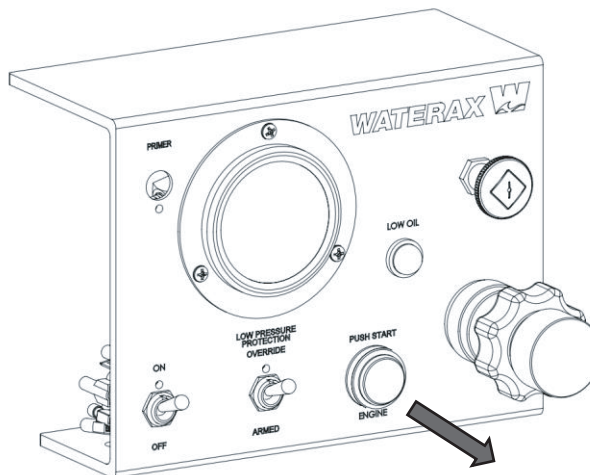
TECH-NOTE

Installation:

Note that the following instructions also apply to the Engine Mount Control Panel found on the portable BB-4 and B2X units.

Disconnect all power to the panel before working on the wiring.

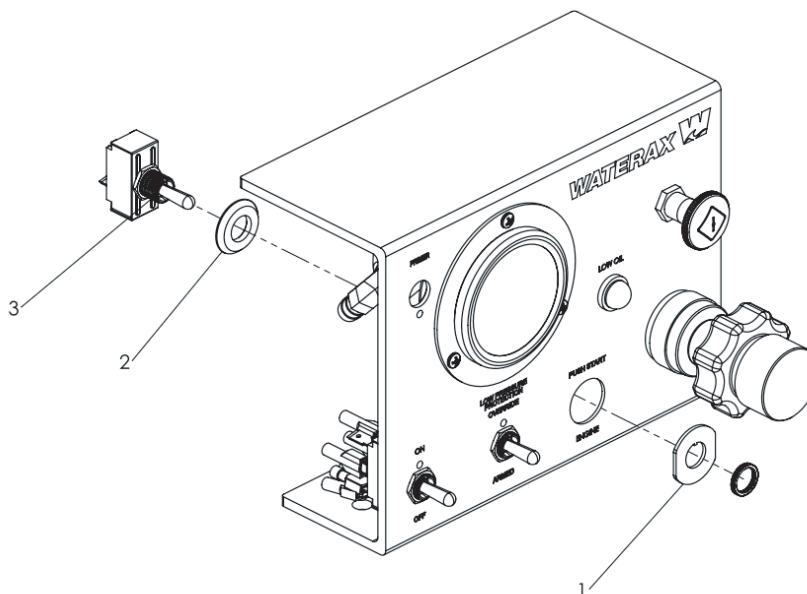
1. Remove Push Start Button



2. Install the new toggle switch as shown.

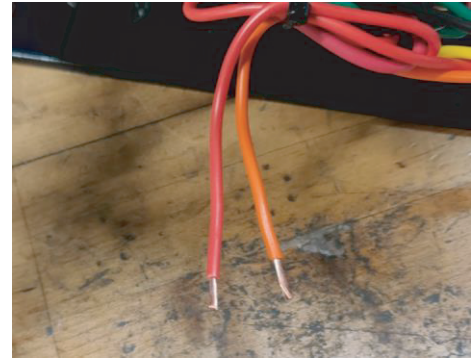
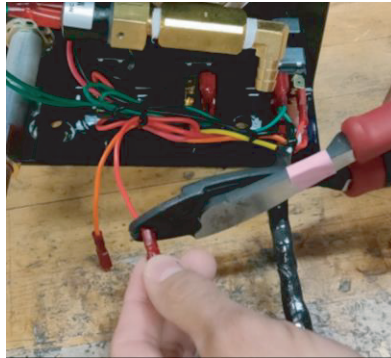
Firmly secure the switch with the round nut which comes with the toggle switch.

Note: Toggle Lever's should point downwards.



TECH-NOTE

3. Cut the two wires that were connected to the push button.
4. Strip the two wires in preparation for new connectors.
5. Crimp new connectors onto wires.



6. Install newly crimped connectors onto the toggle switch tabs (as shown). Make sure they are fully engaged.

Note: You can connect to any of the two tabs. The position is not important.



WATERAX

All information contained in this document including drawings is proprietary to *WATERAX* and may not be copied, reproduced or used in whole or in part without our prior written permission. The information in this document is subject to change without notice. Model displayed with multiple options. Weight and dimensions are approximated and may vary depending on options.

WATERAX INC.

6635 Henri-Bourassa W.
Montreal, QC H4R 1E1

T 514 637-1818

F 514 637-3985

TF 1 855 616 616-1818

info@waterax.com

waterax.com

To help you stay **#ReadyForWildfires**, we've made a few changes, placing 100% of our focus on manufacturing our core products, portable fire pumps.

To do so, we've established a network of trusted supply and distribution partners that can help us provide *WATERAX* pumps quickly in addition to water-handling equipment and accessories.

For immediate assistance when it comes to pumps and water-handling accessories, please contact your local dealer.

For genuine spare parts, visit our online store.



**WE MOVE
WATER**