

VERSAX®

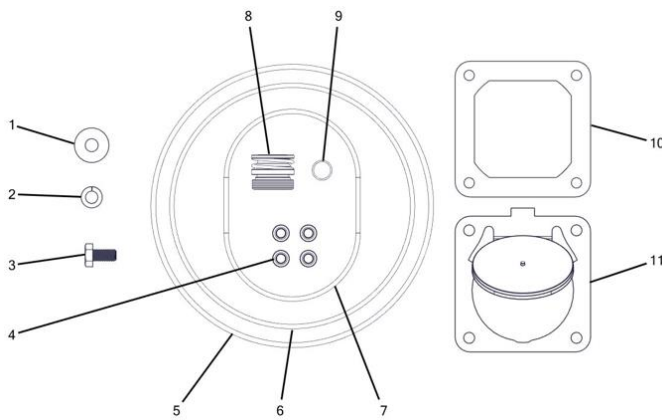
SERIES

Seal Kits

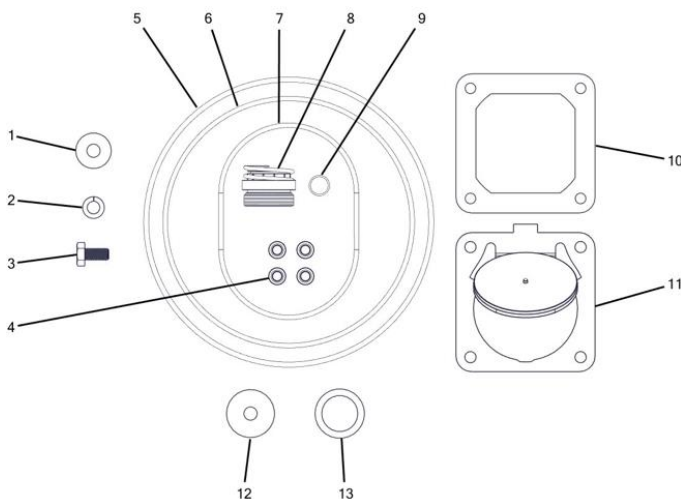
Overview:

The following Tech-Note describes the content of the two seal kits for the VERSAX-6 and VERSAX-9 pumps. Refer to the Owner's Manual for installation instructions.

Parts breakdown:



ID	ITEM NO	DESCRIPTION	QTY
--	801303	SEAL KIT VERSAX VS2-6	--
1	800189	VSC111 WASHER IMPELLER M10X30 VERSAX®	1
2	800220	VSC120 WASHER (SPRING)-IMPELLER VERSAX®	1
3	800207	VSC110 SCREW - IMPELLER VERSAX®	1
4	800228	VSC123 SEAL FOR BOLT VERSAX®	4
5	701292	O-RING #2250040 (METRIC) NITRILE 70 DURO	1
6	800198	VSC113 O-RING DIFFUSER - INTERS VERSAX®	1
7	800187	VSC119 O-RING SUCTION COVER VERSAX®	1
8	701521	ROTARY SEAL 3/4" VERSAX®	1
9	800227	VSC122 O-RING FOR DRAIN PLUG VERSAX®	1
10	800224	VSC107 GASKET DISCHARGE VERSAX®	1
11	800191	VSC116 GASKET - CLACKER ASSY VERSAX	1

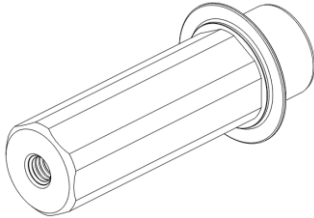


ID	ITEM NO	DESCRIPTION	QTY
--	801304	SEAL KIT VERSAX VS2-9	--
1	800189	VSC111 WASHER IMPELLER M10X30 VERSAX®	1
2	800220	VSC120 WASHER (SPRING)-IMPELLER VERSAX®	1
3	800207	VSC110 SCREW - IMPELLER VERSAX®	1
4	800228	VSC123 SEAL FOR BOLT VERSAX®	4
5	701292	O-RING #2250040 (METRIC) NITRILE 70 DURO	1
6	800198	VSC113 O-RING DIFFUSER - INTERS VERSAX®	1
7	800187	VSC119 O-RING SUCTION COVER VERSAX®	1
8	701522	ROTARY SEAL 1-1/8" VERSAX®	1
9	800227	VSC122 O-RING FOR DRAIN PLUG VERSAX®	1
10	800224	VSC107 GASKET DISCHARGE VERSAX®	1
11	800191	VSC116 GASKET - CLACKER ASSY VERSAX	1
12	800206	VSC134 WASHER IMPELLER M10X40 VERSAX®	1
13	701523	WASHER SEAT SUPPORT VERSAX® SS	1

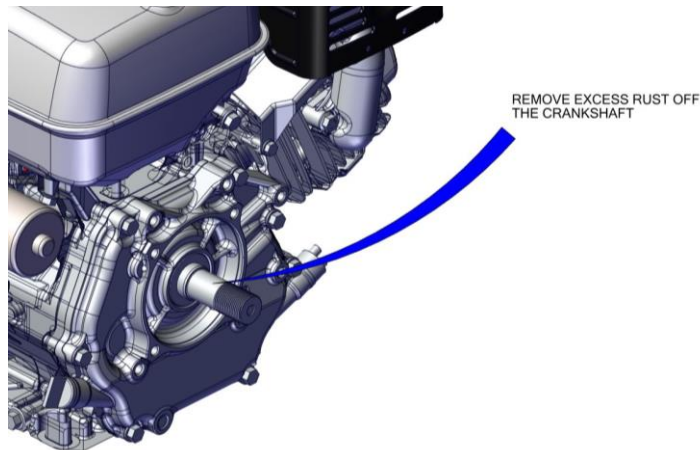
TECH-NOTE

For VERSAX-9 pumps purchased **prior to July 2018**, the stub shaft must be replaced with the upgraded stub shaft 701524; otherwise, the rotary seal 701522 contained in the above seal kit will not fit. The upgraded stub shaft design prevents engine shaft corrosion and improves rotary seal durability.

Upgraded stub shaft 701524 (fits with rotary seal 701522):



Important: when changing the seal on a VERSAX-9 purchased prior to July 2018, you may need to remove excess rust on the engine crankshaft. When doing so, take care to not damage the crankshaft threads. A clean crankshaft will ensure a good fit with the pump stub shaft.



Crankshaft Before Cleaning



Crankshaft After Cleaning