

B2X/B-2

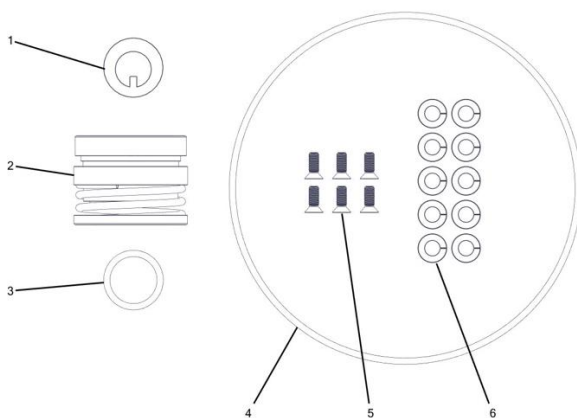
SERIES

Seal Kit

Overview:

The following Tech-Note describes the content of the seal kit for the B-2 and B2X pump end. This kit contains all the parts that should be replaced during a seal replacement. Refer to the respective Owner's Manuals for installation instructions.

Parts breakdown:



ID	ITEM NO	DESCRIPTION	QTY
-	250240	SEAL KIT B-2 & B2X	--
1	600089	12-49 LOCKWASHER SS	1
2	700063	C-6600-9C ROTARY SEAL SILICONE CARBIDE	1
3	700633	C-6600-21 O-RING NITRILE	1
4	800782	C-7030-10 O-RING	1
5	800364	12-25 SCREW #8-32X7/16 PHILLIPS FLAT NYLON LOCK SS	6
6	800360	12-38 LOCKWASHER 1/4 SPLIT SS	10

Stainless Steel Seat Support Washer:

A stainless steel seat support washer (701374) is available for the older volute (no WATERAX casted logo on the volute); the washer provides added support to the rotary seal. For installation instructions, refer to User Instructions B2X/B-2-ROTARY SEAL SEAT SUPPORT IMPROV (701735).



New volute with WATERAX casted logo – stainless steel seat support washer not required.