

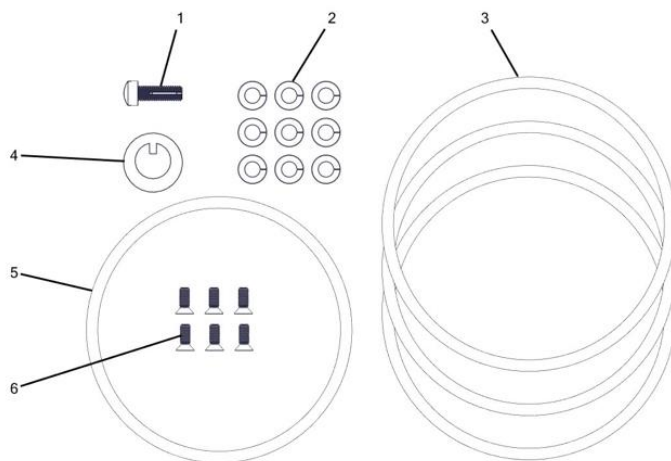
# PUMP END SERIES

## Repair Kit

### **Overview:**

The following Tech-Note describes the content of the repair kits 250228, 250241 and 250227 for the 12-16S, 18-16S and 25-16S high pressure pump ends respectively. The kits contain all the parts that should be replaced during a pump end overhaul. Refer to the respective Owner's Manuals for installation instructions.

### **Parts breakdown:**



ID	ITEM NO	DESCRIPTION	12-16S	18-16S	25-16S
			(250228)	(250241)	(250227)
1	800343	12-42 SCREW 1/4-28X3/4 SLOT FILLISTER NYLONLOCK SS	1	1	1
2	800360	12-38 LOCKWASHER 1/4 SPLIT SS	9	9	9
3	800363	12-27 O-RING #247, NITRILE, 70 DURO	3	2	1
4	600089	12-49 LOCKWASHER SS	1	1	1
5	800450	12-26 O-RING #243, NITRILE, 70 DURO	1	1	1
6	800364	12-25 SCREW #8-32X7/16 PHILLIPS FLAT NYLON LOCK SS	6	6	6