



STRIKER™

The **STRIKER™** is a high-pressure fire pump powered by a **Honda 4-stroke engine with either 2 or 3 stage WATERAX pump end. Qualified for Type-7 brush trucks**, applications include **slip-on units, attack-line firefighting**, high elevation firefighting in mountainous areas, **tandem pumping** over long distances, **cabin protection** and **snow making**. It features a quick-release clamp and a detachable pump end for minimal equipment downtime and inventory, as well as a unique blister resistant mechanical rotary seal to prolong pump end longevity. Aluminum alloy pump components and anodized parts provide lighter weight and greater resistance to corrosion.

They share common parts with the MARK-3® and BB-4® pumps and are renowned for the same durability and reliability.



STRIKER-2™
Honda GX390



Item no: **100046 (STR2-13P) 100045 (STR2-13V) 100127 (STR2-13VS)**
Flow rate at specified pressure
Maximum pressure: **230 PSI** (15.9 bar)
Free flow: **105 US gals/min** (397 L/min)
Maximum head: **531'** (162 m)
Weight: 128 lbs (58 Kg)

STRIKER-3™
Honda GX390



Item no: **100049 (STR3-13P) 100047 (STR3-13P) 100048 (STR3-13P)**
Flow rate at specified pressure
Maximum pressure: **345 PSI** (23.8 bar)
Free flow: **102 US gals/min** (386 L/min)
Maximum head: **796'** (243 m)
Weight: 128 lbs (58 Kg)

MINI-STRIKER®

The **MINI-STRIKER®** is a portable and lightweight pump that is well suited for initial attack operations and is a very popular choice for entry level skid applications. The **MINI-STRIKER®** fire pump combines a single-stage pump end powered by a reliable Honda 4-stroke 2.5 HP engine to generate class leading performance.

The **MINI-STRIKER®** is available as a portable pump and as a vehicle mount unit.



MINI-STRIKER®
Honda GXH50



Item no: **100053**
Flow rate at specified pressure
Maximum pressure: **85 PSI** (5.9 bar)
Free flow: **80 US gals/min** (303 L/min)
Maximum head: **196'** (60 m)
Weight: 20 lbs (9 kg)



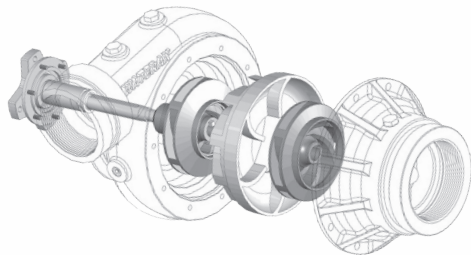
THE WATERAX WAY

WATERAX is proud to continue its century-long tradition of designing, manufacturing and supporting high-performance and durable portable pumps. The key to its success lies in its ability to craft high quality components which form the cornerstone of superior and dependable pump performance.

DETACHABLE MULTI-STAGE PUMP ENDS

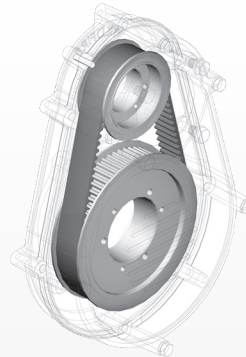
WATERAX performance and dependability come from our superior multi-stage pump end design that provides unrivaled pressure and volume.

- Unique blister-resistant mechanical rotary seal to prolong pump end longevity.
- Maintenance-free sealed bearing to avoid the need for greasing the pump end in the field.
- Anodized aluminum impellers and pump body that eliminate galvanic corrosion common with bronze impellers.



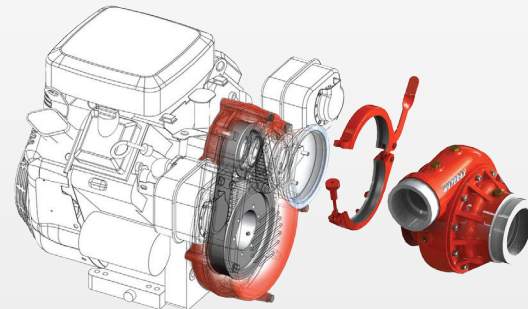
LOW-MAINTENANCE DRIVE ASSEMBLY

Originally designed for the **BB-4®**, the WATERAX low-maintenance drive assembly has been time-tested under the most difficult conditions and proven to be dependable and reliable for over 40 years.



INNOVATIVE QUICK-RELEASE CLAMP

Our innovative pump end quick-release clamp provides ease of maintenance without having to disassemble the complete unit, thus significantly reducing equipment downtime, which can prove crucial in emergency situations.



CONVENIENT 2-IN-1 SYSTEM

The WATERAX 2-in-1 system enables easy on-site interchanging of pump ends. The platform is also compatible with either a high-pressure or a mid-range pump end, providing users with maximal performance flexibility at the lowest possible cost.



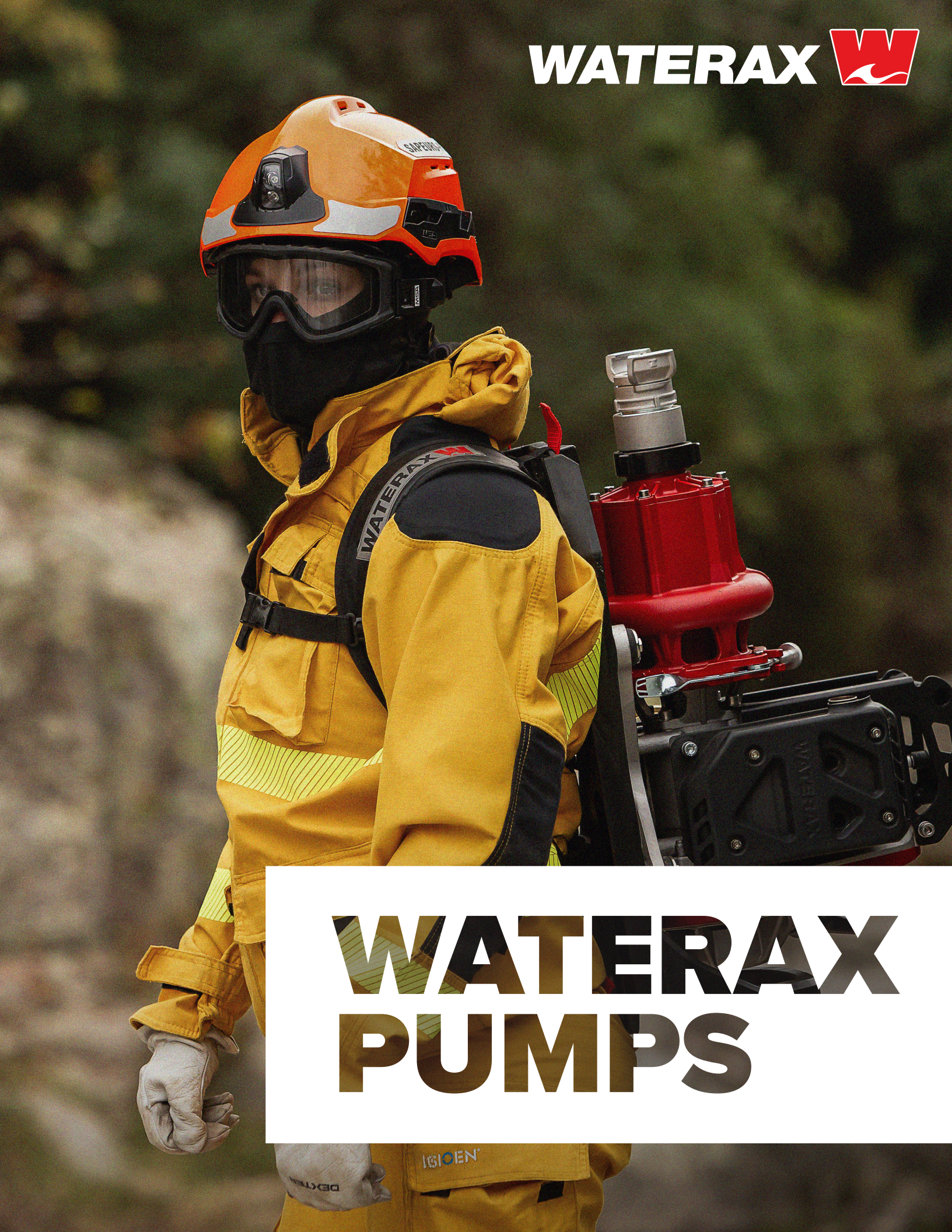
WATERAX INC.
6635 Henri-Bourassa W.
Montréal, QC H4R 1E1
T 514-637-1818
F 514-637-3985
TF 1-855-616-1818

WATERAX CORP.
3701 Innovation Way,
Valparaiso, IN 46383
T 360-574-1818
F 360-571-0443
TF 1-855-616-1818

FOLLOW US



info@waterax.com
www.waterax.com



WATERAX
PUMPS



The **MARK-3®** lightweight portable fire pump has been moving water for forestry agencies around the world since 1964. It quickly became the gold standard for performance, reliability and durability in wildland firefighting operations. To improve the **MARK-3®** pump and update it for the challenges of modern-day wildland firefighting, WATERAX sought the feedback of wildland firefighters. They challenged WATERAX to cut down size and weight without sacrificing performance and reliability. While maintaining the iconic look of the classic **MARK-3®** pump*, the all-new **MARK-3® Watson Edition** is an entirely new platform that boasts exciting modernized features including the first ever purpose-built engine for a wildland pump.

The **MARK-3® Watson Edition** greatly improves user experience in the following areas:

MOBILITY Unit is 30% lighter and 20% smaller.	USER-FRIENDLINESS Smart, intuitive and easy to use.	SAFETY Pump design and features to improve firefighter safety.	EASE OF START Starting a MARK-3® pump has never been this easy!
---	---	--	---

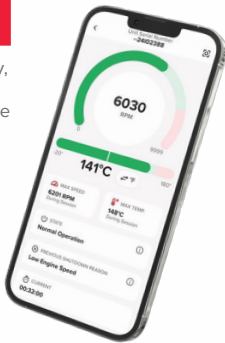


MARK-3® WATSON EDITION WATERAX 140cc

Item no: **100137**
Flow rate at specified pressure
Maximum pressure: **380 PSI** (26.2 Bar)
Free flow: **100 US gals/min** (379 L/min)
Maximum head: **878'** (268 m)
Weight: 44 lbs (20 kg)

NEW FEATURE

Bluetooth connectivity, enabling real-time monitoring via a mobile app with a dashboard interface



The **MINI-MARK® Watson Edition** lightweight high-pressure pump is seamlessly blending the legacy of its predecessor with cutting-edge technology to meet the demands of today's wildland firefighters. This new lightweight high-pressure pump model pays tribute to the original **MINI-MARK®** from the 1990s, known for its lightweight design and reliable performance in initial attack fires. Equipped with a powerful 2.3 hp 2-stroke engine and a single-stage pump end, the **MINI-MARK® Watson Edition** delivers impressive pressures of up to 85 PSI and a maximum flow rate of 102 US GPM (386 L/Min), ensuring an invaluable asset in firefighting operations.

Designed for versatility and portability, the **MINI-MARK® Watson Edition** lightweight pump excels in various applications, including initial attack firefighting, structure protection, sprinkler operations, and tandem pumping over long distances. Its compact size and backpackable design enable firefighters to easily transport it to remote locations, ensuring they have the necessary resources at their fingertips during critical moments.

Item no: **100147**
Flow rate at specified pressure
Maximum pressure: **85 PSI** (6 bar)
Free flow: **102 US GPM** (386 lpm)
Maximum head: **196'** (60 m)
Weight: 18 lbs (8.2 kg)

OPTIONAL EXTERNAL FUEL TANK CONNECTION KIT AVAILABLE

- Integral fuel tank autonomy of one hour
- External fuel tank autonomy of 20 hours



The **VERSAX®** is a versatile, rugged and economical twin-impeller self-priming pump powered by a Honda engine. It provides superior water-transfer performance as well as the ability to combat fire from greater distances and points of elevation.

Qualified for **Type-7 brush trucks**, the **VERSAX®** can be used for firefighting and other applications, such as **tank filling**, general **water transfers**, **irrigation**, and boom spraying. It is also used on **slip-on units** for **small trucks** and **utility vehicles**.

All **VERSAX®** models are available with a **Wrap-Around Frame**, as vehicle mount and as a Cart System (sold separately as CART KIT VERSAX® - 600593)

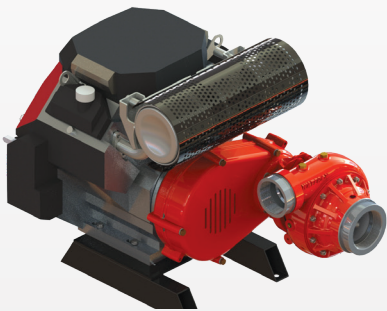
VERSAX® Honda GX200 - 6

Item no: **100110 (VS2-6W)** **100093 (VS2-6V)**
Flow rate at specified pressure
Maximum pressure: **120 PSI** (8.3 bar)
Free flow: **105 US gals/min** (397 L/min)
Maximum head: **277'** (84 m)
Weight: 56 lbs (25 Kg)

VERSAX® Honda GX270 - 9

Item no: **100111 (VS2-9W)** **100078 (VS2-9EV)**
Flow rate at specified pressure
Maximum pressure: **150 PSI** (10.3 bar)
Free flow: **105 US gals/min** (397 L/min)
Maximum head: **347'** (106 m)
Weight: 79 lbs (36 Kg)

B2X™



B2X-18VX B&S Vanguard™ - 18

Flow rate at specified pressure
Maximum pressure: **190 PSI** (13.1 bar)
Free flow: **300 US gals/min** (1136 L/min)
Maximum head: **439'** (134 m)
Weight: 157 lbs (71 Kg)

B2X-21H™ Honda GX630 - 21

Flow rate at specified pressure
Maximum pressure: **200 PSI** (13.8 bar)
Free flow: **300 US gals/min** (1136 L/min)
Maximum head: **462'** (141 m)
Weight: 153 lbs (69 Kg) - 169 lbs (77 Kg)

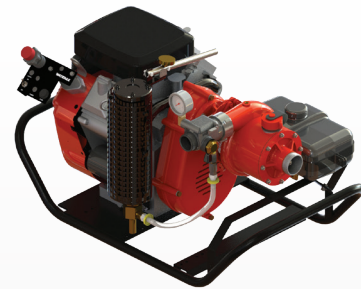
B2X-23V™ B&S Vanguard™ - 23

Flow rate at specified pressure
Maximum pressure: **200 PSI** (13.8 bar)
Free flow: **300 US gals/min** (1136 L/min)
Maximum head: **462'** (141 m)
Weight: 156 lbs (71 Kg)

B2X™ DIESEL



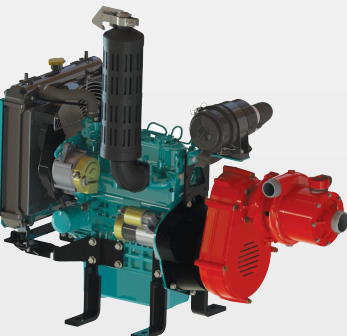
BB-4®



BB-4® B&S Vanguard™ - 18

Item no: **100025 (BB-4®-18V)**
Flow rate at specified pressure
Maximum pressure: **440 PSI** (30.3 bar)
Free flow: **104 US gals/min** (394 L/min)
Maximum head: **1016'** (310 m)
Weight: 153 lbs (69 Kg) - 169 lbs (77 Kg)

BB-4® DIESEL



The **B2X-D902 diesel** unit is a mid-range fire pump ideal for brush trucks used in wildland and urban interface operations. A strong show of both pressure and volume makes it the ideal pump for vehicle-mounted applications dedicated to municipal operations and in wildland urban interface areas. The WATERAX quick-release clamp provided on the **B2X™** pump provides easy maintenance without the need to disassemble the complete pump unit, which significantly reduces equipment downtime.

B2X-D902 Kubota D902-E4B

Item no: **100096 (BB-4®-D902V)**
Flow rate at specified pressure
Maximum pressure: **180 PSI** (12.4 bar)
Free flow: **310 US gals/min** (1173 L/min)
Maximum head: **415'** (127 m)
Weight: 280 lbs (127 Kg)

The **BB-4®** is a high-pressure centrifugal pump that has been used by forestry agencies to combat wildfires for over 40 years. It has been the weapon of choice in many wildland operations and is especially suited for type 6 brush trucks. Available in portable and vehicle-mounted configurations, the **BB-4®** pump generates the high pressure required to overcome challenges that arise in difficult terrain. A unique feature of the **BB-4®** pump is the quick-release pump head that is interchangeable with the MARK-3®. This greatly reduces spare part inventories and allows for quick infield swap outs.

BB-4® Honda GX630 - 21

Item no: **100032 (BB-4®-21H)**
Flow rate at specified pressure
Maximum pressure: **440 PSI** (30.3 bar)
Free flow: **106 US gals/min** (401 L/min)
Maximum head: **1016'** (310 m)
Weight: 153 lbs (69 Kg) - 169 lbs (77 Kg)

BB-4® B&S Vanguard™ - 23

Item no: **100028 (BB-4®-23V)**
Flow rate at specified pressure
Maximum pressure: **440 PSI** (30.3 bar)
Free flow: **106 US gals/min** (401 L/min)
Maximum head: **1016'** (310 m)
Weight: 153 lbs (69 Kg) - 169 lbs (77 Kg)

The **BB-4® diesel** high-pressure fire pump pairs the proven WATERAX 4-stage high-pressure pump end with a powerful Kubota D902 25 HP diesel engine. Compatible with type 4, type 5, type 6 brush trucks and listed on the USFS type 6 Fire Apparatus specifications, the diesel **BB-4®** pump is suited to operate in a variety of fire operations. This unit is optimal for direct attack, remote watering, sprinkler systems and is popular for slip-on units.

BB-4-D902 Kubota D902-E4B

Item no: **100095 (B2X-D902V)**
Flow rate at specified pressure
Maximum pressure: **395 PSI** (27.2 bar)
Free flow: **106 US gals/min** (401 L/min)
Maximum head: **911'** (278 m)
Weight: 280 lbs (127 Kg)

MINI-MARK®



**MINI-MARK®
WATSON EDITION**
2-Stroke Lightweight
High-Pressure Pump