

# MARK-3<sup>®</sup>

## SERIES

### 185cc Gudgeon Pin

**Overview:**

A new gudgeon pin has recently been introduced on the MARK-3. The change became effective in March 2015. The new gudgeon pin is fully backwards compatible.

**New gudgeon pin:**

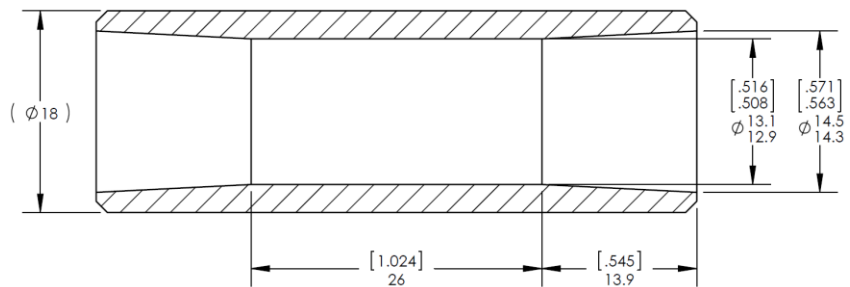
The new gudgeon pin has a more modern design. Its inner diameter is tapered: the pin is thinner at the edges and becomes thicker towards the center where the forces and stresses are greater. The result is a new gudgeon pin that is 19% lighter than the previous design. The lighter weight helps increase the durability of the crankshaft and bearings. The item number (800030) remains unchanged.



“Old” gudgeon pin



“New” gudgeon pin



“New” gudgeon pin dimensions