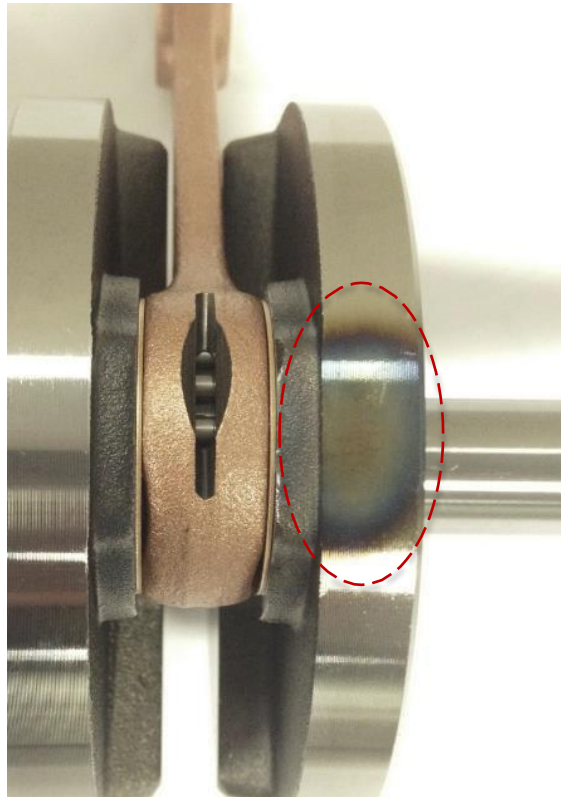


MARK-3[®] 185cc Crankshaft

TECH-NOTE

Heat treatment discoloration

On the current batch of R-341N CRANKSHAFT/CONN. ROD ASSY (801196), a discoloration can be observed on the crank halves:



This heat treatment discoloration is normal and happens during the induction hardening process. The discoloration has **no impact** on the crankshaft.

On future batches, an additional surface finishing operation will be added to remove the discoloration.

TECH-NOTE

*****(March 2015)*****

Overview

An updated crankshaft will be introduced on the MARK-3 effective April 2015. In addition, certain crankshaft spare parts will no longer be available. The following tech-note will outline these changes.

Crankshaft assembly

Item R-341 Crankshaft/Conn. Rod Assy (800027) will be replaced by item R-341N Crankshaft/Conn. Rod Assy (801196). The R-341N crankshaft is fully compatible and retrofitable with both CDI and POINT ignition engines. The main difference between the two crankshafts is that the output shaft is no longer pressed into the crank web; it is now machined from the same forging.

R-341 CRANKSHAFT/CONN. ROD ASSY (800027)	R-341N CRANKSHAFT/CONN. ROD ASSY (801196)
	
 <p data-bbox="269 1514 695 1541">Output shaft pressed into crank web</p>	 <p data-bbox="906 1514 1451 1541">Output shaft machined from crank web forging</p>

TECH-NOTE

Crankshaft spare parts

The following R-341 crankshaft spare parts have been discontinued:

R-340 CONNECTING ROD (800037)	R-323M CRANKSHAFT EXTENSION CPLG SIDE (800010)
 A connecting rod with a bronze-colored body and a silver-colored end.	 A long, cylindrical metal extension with a threaded end.
R-324M CRANKSHAFT HALF, CPLG SIDE (800008)	R-341M CRANKSHAFT HALF, FLYWHEEL SIDE (800026)
 A circular metal crankshaft half with a threaded shaft protruding from the center.	 A circular metal crankshaft half with a threaded shaft protruding from the center, similar to the R-324M part.

These spare parts will be available while quantities last.

WATERAX

All information contained in this document including drawings is proprietary to *WATERAX* and may not be copied, reproduced or used in whole or in part without our prior written permission. The information in this document is subject to change without notice. Model displayed with multiple options. Weight and dimensions are approximated and may vary depending on options.

WATERAX INC.
6635 Henri-Bourassa W.
Montreal, QC H4R 1E1
T 514 637-1818
F 514 637-3985
TF 1 855 616-1818
info@waterax.com

waterax.com

To help you stay **#ReadyForWildfires**, we've made a few changes, placing 100% of our focus on manufacturing our core products, portable fire pumps.

To do so, we've established a network of trusted supply and distribution partners that can help us provide *WATERAX* pumps quickly in addition to water-handling equipment and accessories.

For immediate assistance when it comes to pumps and water-handling accessories, please [contact your local dealer](#).

For genuine spare parts, visit our [online store](#).

Copyright © 2015 WATERAX Inc.

Publication Number: 701267, Rev.2 All rights reserved. Printed in Canada.

